



# 13b Bloom Grove

London, SE27 0HZ

**Asking Price £450,000**

Set on the charming Bloom Grove, this beautifully presented two-bedroom flat offers a fantastic opportunity to enjoy the best of West Norwood's vibrant and welcoming community. Perfectly positioned for urban living, the property combines comfort, style, and convenience in equal measure.

The well-proportioned reception room provides a versatile space for relaxing evenings or entertaining friends, while the two generously sized bedrooms offer flexibility—ideal for individuals, couples, or small families looking to personalise their space and truly make it their own. The property also benefits from excellent built-in storage throughout, providing practical and convenient solutions for everyday living. Further benefits include access to a communal outdoor space to enjoy during the warmer months—a rare and welcome bonus for city living.

Located just moments from an excellent range of local amenities, including independent shops, cosy cafés, and green open spaces, everything you need is right on your doorstep. West Norwood also benefits from superb transport links, making commuting or exploring the city both quick and easy. Whether you're a first-time buyer or an investor looking for a well-connected London home, this flat is a fantastic choice in a sought-after neighbourhood.

Don't miss this opportunity to secure a home that blends lifestyle, location, and charm—arrange your viewing today.

Council Tax: Lambeth Council – Band C (£1,819.66 per annum)  
Tenure: Share of Freehold

## Viewing

Please contact our Galloways West Norwood Office on 020 8766 6111

if you wish to arrange a viewing appointment for this property or require further information

- TWO BEDROOM FLAT
- VICTORIAN CONVERSION
- ABUNDANCE OF STORAGE
- LOCATED IN THE HEART OF WEST NORWOOD
- SHARE OF FREEHOLD
- TREELINED CUL-DE-SAC
- RAISED GROUND FLOOR
- 9 MINUTE WALK TO TULSE HILL TRAIN STATION
- 4 MINUTE WALK TO WEST NORWOOD TRAIN STATION
- (DISTANCES ESTIMATED BY GOOGLE MAPS)



## Floor Plan

**Bloom Grove, SE27**  
**2 Bedroom Flat**

APPROXIMATE GROSS INTERNAL AREA: 502 SQ FT / 46.6 SQ M

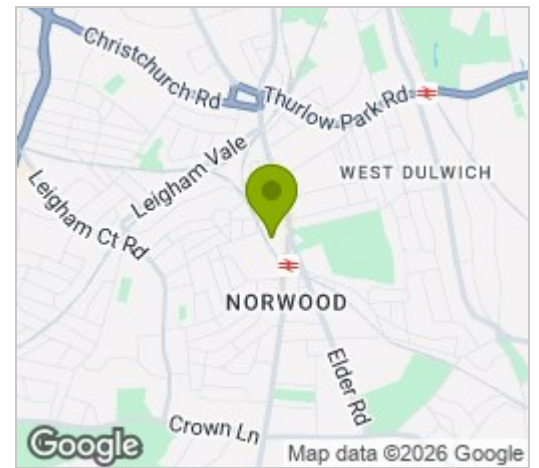


RAISED GROUND FLOOR

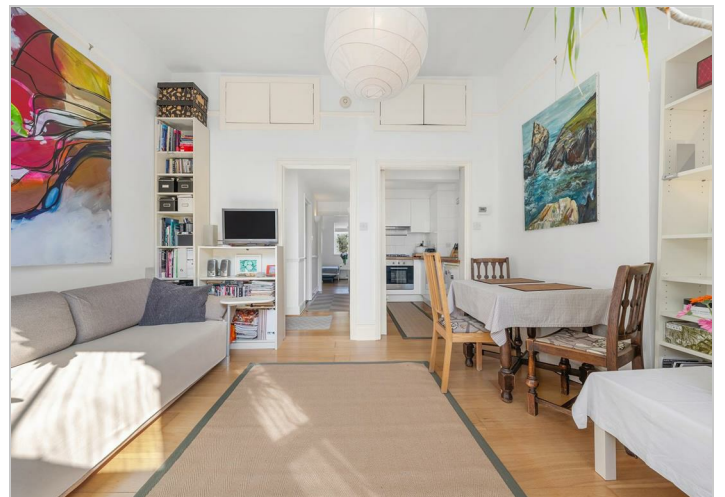
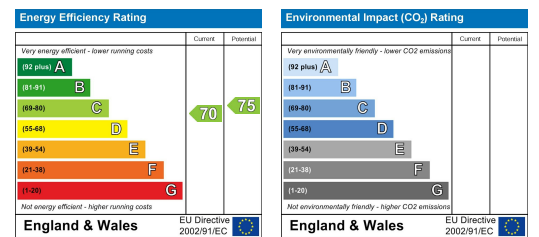


While we try our very best, floor plans are produced as a guide only and we take no responsibility for the precise accuracy with which any property is represented.

## Area Map



## Energy Efficiency Graph



These particulars, whilst believed to be accurate are set out as a general outline only for guidance and do not constitute any part of an offer or contract. Intending purchasers should not rely on them as statements of representation of fact, but must satisfy themselves by inspection or otherwise as to their accuracy. No person in this firm's employment has the authority to make or give any representation or warranty in respect of the property.